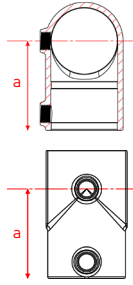
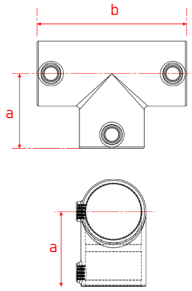


101 Short Tee



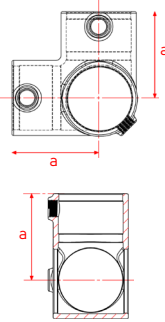
Type	Size (mm)	a (mm)
A27	26.9	41
B34	33.7	46
C42	42.4	60
D48	48.3	68
E60	60.3	84

104 Long Tee



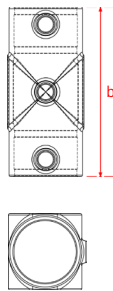
Type	Size (mm)	a (mm)	b (mm)
A27	26.9	41	82
B34	33.7	46	92
C42	42.4	60	120
D48	48.3	68	135
E60	60.3	84	168

116 3 Way Through



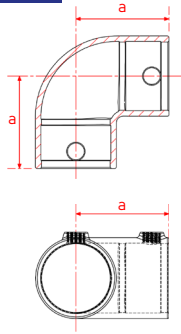
Type	Size (mm)	a (mm)
A27	26.9	41
B34	33.7	46
C42	42.4	60
D48	48.3	68
E60	60.3	84

119 2 Socket Cross



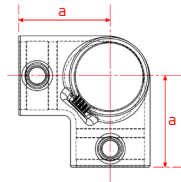
Type	Size (mm)	b (mm)
A27	26.9	82
B34	33.7	92
C42	42.4	120
D48	48.3	135
E60	60.3	168

125 2 Way 90° Elbow



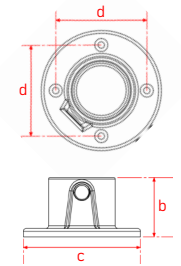
Type	Size (mm)	a (mm)
A27	26.9	41
B34	33.7	46
C42	42.4	60
D48	48.3	68
E60	60.3	84

128 3 Way 90° Elbow



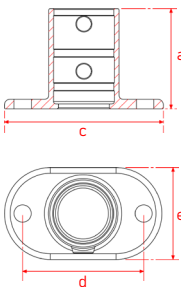
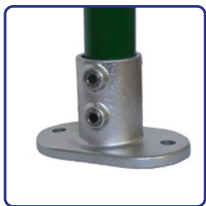
Type	Size (mm)	a (mm)
A27	26.9	41
B34	33.7	46
C42	42.4	60
D48	48.3	68
E60	60.3	84

131 Base Flange



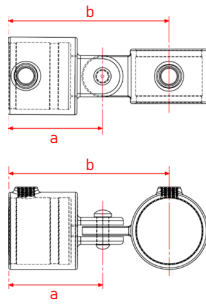
Type	Size (mm)	b (mm)	c (mm)	d (mm)	Hole Dia (mm)
A27	26.9	42	83	59	7
B34	33.7	48	89	65	7
C42	42.4	51	102	76	7
D48	48.3	59	114	88.5	7
E60	60.3	64	128	97	7

132 Railing Base Flange



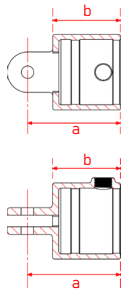
Type	Size (mm)	a (mm)	c (mm)	d (mm)	e (mm)	Hole Dia (mm)
A27	26.9	60	105	76	52	11
B34	33.7	71	127	89	62	15
C42	42.4	84	139	101	72	15
D48	48.3	89	152	114	86	15
E60	60.3	104	165	127	96	18

173 Single Swivel Combination



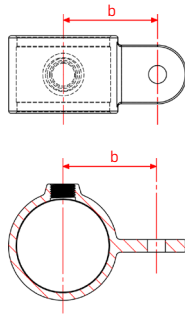
Type	Size (mm)	a (mm)	b (mm)
A27	26.9	61	101
B34	33.7	61	104.5
C42	42.4	69	117
D48	48.3	77	130
E60	60.3	89	152

173F Single Swivel Combination Female Part



Type	Size (mm)	a (mm)	b (mm)
A27	26.9	61	38
B34	33.7	61	38
C42	42.4	69	46
D48	48.3	77	55
E60	60.3	89	65

173M Single Swivel Combination Male Part



Type	Size (mm)	b (mm)
A27	26.9	40
B34	33.7	43.5
C42	42.4	48
D48	48.3	53
E60	60.3	60